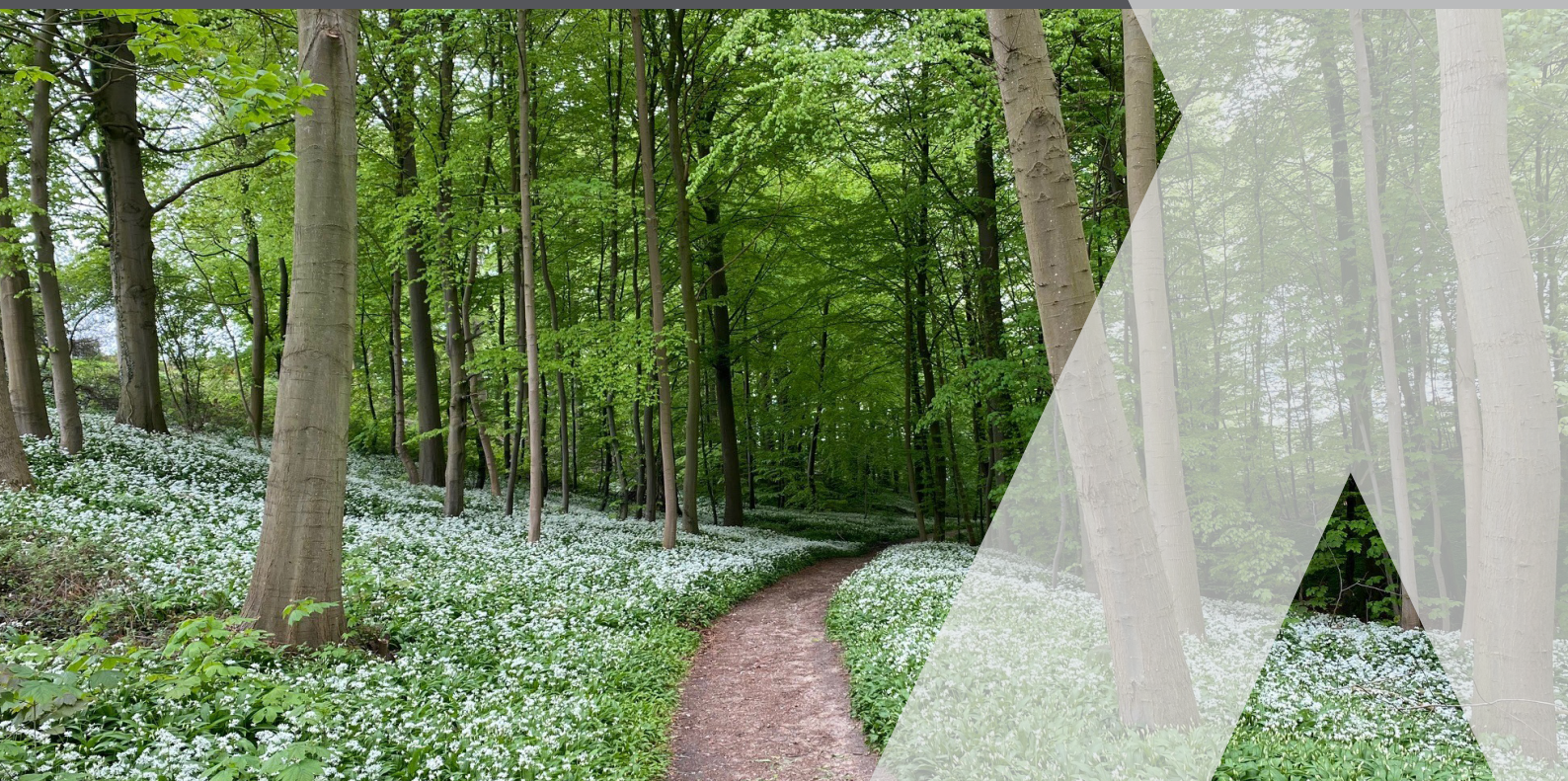


SUSTAINABLE BUILDING

ALFIX ENVIRONMENTAL DOCUMENTATION



Responsible Danish manufacturer

For more than 20 years, Alfix has worked dedicatedly and determined to reduce environmental impact while still producing working environmentally friendly products and solutions to the market.

But in addition to environmental and working environmental considerations (sustainability), Alfix takes a clear position on the surrounding society in general. As has always been the case with Alfix.

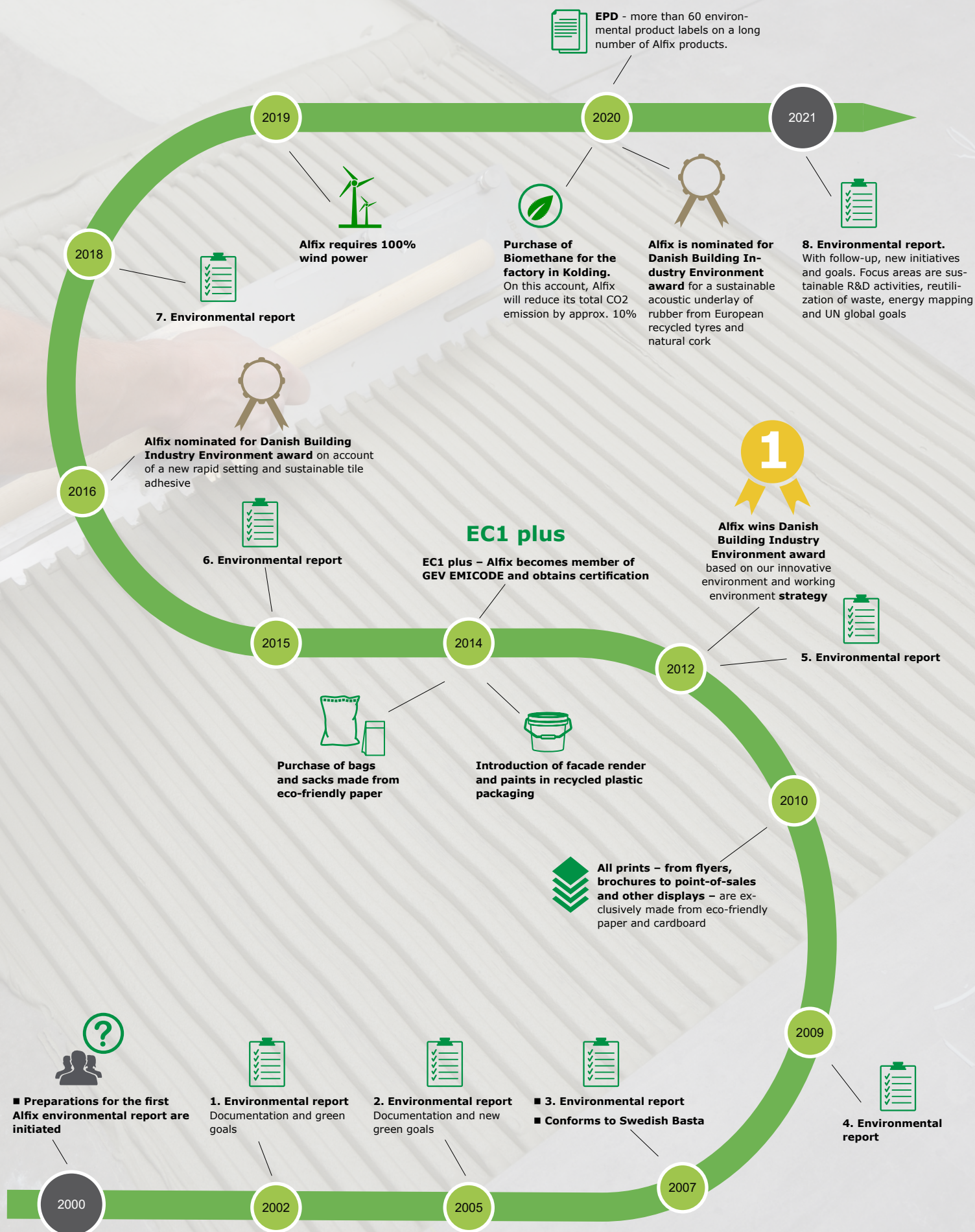
"Responsible Strength" is our slogan today, which signals that we also intend to take responsibility for socially relevant aspects of society.

In the following pages we present an overview of the environmental documentation for the Alfix product range and a graphical representation of our historical green journey. A journey we look forward to continuing.

ENVIRONMENTAL DOCUMENTATION

Product	Product type / category	EMICODE	EPD	Nordic Ecolabelling - Listed *)	DGNB 2020 ENV1.2	Basta konform	Byggvaru-bedömningen ACCEPTERAS	Sunda-hus
1K Sealing Membrane	Sealing membrane	EC1 PLUS	■	■	■	■	■	C+
2K Binder	Sealing membrane	EC1 PLUS	■	■	■	■	■	B
2K Cement	Sealing membrane	EC1 PLUS	■	■	■	■	■	B
Acoustic PS3 - recycled	Acoustic underlay	EC1 PLUS		■	■	■	■	B
Reinforcing strip	Sealing membrane	-		■		■		
Drain mat	Sealing membrane	-		■		■	■	
CombiFix	Tile adhesive	EC1 PLUS	■	■	■	■	■	B
CombiQuickFix	Tile adhesive	EC1 PLUS	■		■	■		B
FineFuge - CeraFill 5	Grout	EC1 PLUS	■	■	■	■	■	B
FlexBinder	Primer/binder	EC1 PLUS	■		■	■	■	B
IndustryFuge - CeraFill 18	Grout	EC1 PLUS	■	■	■	■	■	B
LetFix	Tile adhesive	EC1 PLUS	■	■	■	■	■	B
LetFix less dust	Tile adhesive	EC1 PLUS	■	■	■	■	■	B
LetFix Universal	Tile adhesive	EC1 PLUS	■	■	■	■	■	B
M-Silicon	Silicone sealant	EC1 PLUS	■	■	■	■	■	B
NormalFix	Tile adhesive	EC1 PLUS	■	■	■	■	■	B
PlaneMix 10	Levelling compounds	EC1 PLUS	■	■	■	■	■	
PlaneMix 100	Levelling compounds	EC1 PLUS	■	■	■	■		
PlaneMix 20	Levelling compounds	EC1 PLUS	■	■	■	■	■	B
PlaneMix 25 Exterior	Levelling compounds	EC1 PLUS	■		■	■		
PlaneMix 30	Levelling compounds	EC1 PLUS	■	■	■	■		
PlaneMix 50	Levelling compounds	EC1 PLUS	■		■	■	■	B
PlaneMix 50 less dust	Levelling compounds	EC1 PLUS	■	■	■	■	■	B
PlaneMix 60	Levelling compounds	EC1 PLUS	■	■	■	■	■	B
PlaneMix 80	Levelling compounds	EC1 PLUS	■		■	■		
PlaneMix Basic	Levelling compounds	EC1 PLUS	■	■	■	■	■	B
PlaneMixBinder	Primer/binder	-	■					
PlaneMixPrimer	Primer/binder	EC1 PLUS	■	■	■	■	■	B
PlaneMix S12 rapid	Levelling compounds	EC1 PLUS	■	■	■	■	■	B
PlaneMix S40	Levelling compounds	EC1 PLUS	■		■	■		
PlaneMix S8 rapid	Levelling compounds	EC1 PLUS	■	■	■	■		B
ProFix	Tile adhesive	EC1 PLUS	■	■	■	■	■	B
QuickFix premium	Tile adhesive	EC1 PLUS	■	■	■	■	■	
QuickFuge 8 premium	Tile adhesive	EC1 PLUS	■	■	■	■	■	
ReadyFlex	Tile adhesive	-	■			■		B
RustiqFuge - CeraFill 20	Grout	EC1 PLUS	■		■	■	■	B
Seal-Strip	Sealing membrane	-				■	■	
TopCoat Design	Levelling compounds	EC1 PLUS	■		■			
UniversalFuge - CeraFill 10	Grout	EC1 PLUS	■	■	■	■	■	B
VT Tape / VT corner	Sealing membrane	-		■		■	■	B
VT Pipe sealing	Sealing membrane	-		■		■	■	B
Sealing Primer	Primer/binder	EC1 PLUS	■	■	■	■	■	B
Waterproofing membrane	Sealing membrane	EC1 PLUS		■	■	■	■	B

SUSTAINABILITY JOURNEY





Alfix er en dansk familieejet virksomhed, stiftet i 1963.

Vi vil skabe tryghed for dem, der bygger fremtidens Norden.

Sortimentet består af et bredt udvalg af: Støbemasser, spartelmasser, vådrumsprodukter, fliseklæbere, fugemasser, pudsprodukter, facademaling samt andre specialprodukter.



Dansk produktion & familieejede siden 1963

ALFIX A/S
H. C. Ørstedes Vej 11-13
DK-6000 Kolding

+45 75 52 90 11
alfix@alfix.dk
alfix.com

ALFIX®
Responsible strength